

PLANNING INSTITUTE OF AUSTRALIA
NATIONAL AWARDS FOR PLANNING EXCELLENCE **2021**





CONTENTS

| | |
|--|----|
| MESSAGE FROM THE CHIEF EXECUTIVE OFFICER | 4 |
| MESSAGE FROM THE PRESIDENT | 5 |
| MESSAGE FROM THE NATIONAL AWARDS CONVENOR | 6 |
| NATIONAL JUDGES | 7 |
| ABOUT PIA: AUSTRALIA'S TRUSTED VOICE ON PLANNING | 10 |
| NATIONAL BOARD | 11 |
| DIVISION PRESIDENTS | 11 |
| AWARD SPONSORS | 12 |
| PLANNER OF THE YEAR | 18 |
| YOUNG PLANNER OF THE YEAR | 20 |
| PLANNING CHAMPION | 22 |
| CUTTING EDGE RESEARCH AND TEACHING | 25 |
| HARD WON VICTORY | 26 |
| BEST PLANNING IDEAS - SMALL PROJECT | 28 |
| BEST PLANNING IDEAS - LARGE PROJECT | 30 |
| IMPROVING PLANNING PROCESSES AND PRACTICES | 32 |
| PUBLIC ENGAGEMENT AND COMMUNITY PLANNING | 34 |
| OUTSTANDING STUDENT PROJECT | 37 |
| FROM PLAN TO PLACE | 39 |
| GREAT PLACE | 41 |
| 2021 AWARD NOMINATIONS | 44 |

MESSAGE FROM THE

CHIEF EXECUTIVE OFFICER

At its most stripped-down, urban planning is the design and regulation of spaces and places where our communities can thrive, even in the face of challenges from our changing climate, global pandemics and economic shocks. Planning's breadth and complexities arise because its practitioners strive to ensure towns, cities and regions are developed sustainably, foster equity, fairness and access. Planners want to make economic, environmental and social progress for current as well as future generations. That's not easy to do when new technologies are unfolding rapidly, when our populations are growing and demanding new choices and options. For planning to respond by enabling and driving sustainable development, it must be creative, enhancing, and constantly improving.

The Planning Institute of Australia's National Awards for Planning Excellence showcase these attributes, and more, across a range of areas and environments and celebrates the best that planning can be. The awards start with state and territory judges selecting the best examples of planning in their jurisdictions. The winners of eligible categories across Australia are then elevated for judging by a national panel, culminating in the National Awards for Planning Excellence ceremony. When we celebrate our high achievers we not only show that #planningmatters but we inspire each other to always aim high. With that in mind, I commend success stories of 2021 to you.



A handwritten signature in black ink that reads "D Williams".

David Williams
Chief Executive Officer

MESSAGE FROM THE

PRESIDENT

Welcome to PIA's National Awards for Planning Excellence 2021. This event provides the opportunity to showcase the huge variety of work our profession does and to celebrate excellence.

In 2020 we delivered our first online National Awards event, with great success. In 2021 we are delivering our second online National Awards event.

Throughout 2020 and 2021, Australian planners have continued to adapt to new ways of working. Importantly, among all the other challenges we face, people have found the capacity to continue nominating into the Institute's Awards for Planning Excellence. I would like to thank all nominees for the effort that has been made to nominate so many outstanding examples of great planning.

Congratulations to all the 2021 National Award winners and commendation recipients.

I would like to express my gratitude to Steve O'Connor RPIA (Fellow), Immediate Past President, for his outstanding service as National Awards Convenor, and to all our National Judges for their dedicated work.



A handwritten signature in black ink that reads "Darren Crombie".

Darren Crombie RPIA (Fellow)
President

MESSAGE FROM THE NATIONAL AWARDS CONVENOR

The many people who worked on the nominations for PIA's National Awards for Planning Excellence 2021, deserve a special vote of thanks as these nominations were prepared last year during the multiple disruptions and enormous uncertainty caused by the COVID-19 global pandemic. Notwithstanding these challenges, planners from every Australian State and Territory found the time and energy to submit high quality nominations. In total, we had almost 60 nominations across 12 award categories which ensured that the National Judging Panel had a difficult task ahead of them.

I would like to acknowledge the long hours put in by all the National Judges who carefully reviewed all the nominations. They generously volunteered their time to this demanding task and deserve to be recognized for their efforts.

All the award winners and those who received commendations, can feel justifiably proud of their achievements. To be recognized by your peers as the "best of the best" is indeed a high accolade. To those who did

not receive an award, you can rest in the knowledge that your nomination has already won a Divisional Award.

Finally, as I reflect on my time as Chair of the National Judging Panel over the past 3 years, the overwhelming conclusion that I am compelled to draw, is that Planning Profession is in great shape. Despite the many difficulties endured as a result of the global pandemic, our profession continues to produce outstanding projects that serve the current and future needs of our many and varied communities scattered around the nation.

These annual awards provide us with a glimpse of the amazing work planners undertake, whether it be in the public or private sector, in the tropical north or in cooler climates in the south of the continent and whether it serves the needs of regional Australia or the population in our Capital cities. Year after year we see cutting edge projects which provide us with insights and lessons learned, so we can all travel down the path of continuous improvement.



Steve O'Connor

Steve O'Connor RPIA (Fellow)
National Awards Convenor

NATIONAL JUDGES



STEVE O'CONNOR RPIA (FELLOW)

Steve holds an undergraduate Planning degree as well as a postgraduate Masters degree in Science. He has worked in local government in NSW, in the public service in the Northern Territory, in the private sector as a consultant and more recently as a Commissioner with the NSW Planning Commission.

Steve is a Fellow of PIA, a Registered Planner and in 2010 was appointed by the NSW Minister for the Environment to the Natural Resources Advisory Council (NRAC). He served as a Director on PIA's National Board from 2013 to 2020 and was elected as National President in 2018 after serving four years as a National Vice-President. Steve has written numerous articles for PIA publications and is passionate about his profession. He has performed the role of a judge in planning awards at State and National levels.



PETER CIEMITIS MPIA (FELLOW)

Peter is Principal in the Hatch Robertsday Perth Studio, with over 40 years of experience. Awarded PIA WA Planner of the Year in 2014, he has developed a high level of expertise in the design and delivery of urban centres, urban infill, waterfronts and residential development. In particular, he consistently pursues a balance between delivering projects that achieve a pragmatic and viable commercial outcome, with an eye to creating places of beauty and social and cultural meaning. A long standing contributor to PIA, Peter was instrumental in re-invigorating the Urban Design Chapter (now Urban Design Forum) in WA.



ELLE CLOUSTON MPIA

Elle is an Acting Principal at HillPDA with over 13 years' experience working in the public and private sector in NSW and Queensland.

Specialising in strategic planning, Elle aims to bridge the gap between economics, planning and design. Elle is passionate about securing a continued supply of employment lands and revitalising centres to ensure jobs are in appropriate locations for future generations. Elle has contributed to award winning planning policy work, having undertaken advisory services for various government and private sector organisations across Australia.

Elle is an accredited member of the International Association for Public Participation Australasia (IAP2) and is a Vice President of the NSW PIA Divisional Committee. Elle has performed the role of judge and convenor at the State and National awards over the past three years.

NATIONAL JUDGES



**LIZ DE CHASTEL RPIA
(LIFE FELLOW)**

Liz is an experienced planner and policy adviser with over 30 years' experience working in complex urban, regional and social planning settings, policy development and advocacy. Liz has worked in senior roles within the NFP and private sector and government in the NT, Qld and ACT. Liz is currently a senior adviser in the Australian Local Government Association. She has been the chair of the ACT PIA Division Awards judging committee since 2015 and is a PIA mentor to young planners



HEIDI GOESS MPIA

Heidi Goess is the Director at Plan Place and is proud to provide strategic and statutory planning advice to local government, private developers, and the community.

Before establishing Plan Place, Heidi has worked as a planner in state government, local government, and the private sector in South Australia and Tasmania. Heidi's career has spanned over more than 25 years. She has worked in a diverse range of roles from statutory planning, policy development, primary industry sector, development projects to strategic planning. Heidi's passion is in strategic planning. She enjoys developing planning tools for councils that are visually vibrant, engaging, and communicate land use planning concepts in a clear and easy to understand manner.

Heidi is an advocate for the community and has assisted individuals and groups with navigating through the planning process in Tasmania to give a constructive voice to their concerns.



CATE HART RPIA (FELLOW)

Cate is a Fellow of the Planning Institute of Australia, and is currently Vice President of the Institute, representing South Australia on the national board. She has worked across both the public and private sectors in a wide range of disciplines including environmental management, community and stakeholder engagement, strategic and development planning, heritage, governance and organisational leadership.

She is currently Executive Director with Department of Environment and Water leading the Environment, Heritage and Sustainability Division. Prior to joining State Government in 2019, she had significant experience in local government, having worked in the local government sector for over 30 years, including executive roles as CEO of Wakefield Regional Council and the City of Prospect.



EMILY KILLIN MPIA

Emily Killin is a Strategic Planning Manager at the Victorian Planning Authority (VPA). In the Regional Victoria team she works across the state with local government and agencies - responding to and planning for growth.

She has experience in local government and as a Sessional Planning Tutor at the University of Melbourne. Emily was a Victorian Young Planners Committee member and participates in the PIA mentoring program. She was co-convenor of the Victorian Planning Awards for excellence (2019 & 2020).

Emily has an interest in streamlining planning processes, and infrastructure funding and delivery. She has an article in the Commonwealth Journal of Local Governance on this topic.



JOSHUA WALKER MPIA

Josh is passionate about planning for cities and regions. He has worked in both the public and private sector across Queensland and currently holds the position of Co-ordinator of Regional Planning and Advocacy at Sunshine Coast Council, where he collaborates across the organisation to achieve long-term growth management outcomes. His experience is varied, having formulated strategies and policy for a range of complex urban, rural and environmental issues, as well as managing a high profile development approvals and acting as an expert witness in the Planning and Environment Court (Qld). He is also fortunate to have assisted the State Government and Indigenous organisations in realising supportive planning policy for First Nations since its infancy in Queensland.

ABOUT PIA:

AUSTRALIA'S TRUSTED VOICE ON PLANNING

The Planning Institute of Australia – and before it, the Royal Australian Planning Institute – has proudly championed planning professionals in Australia and internationally since 1951. PIA is the only national organisation representing urban and regional planners in Australia, and our goal is to support planners to create a more liveable and sustainable built environment.

Good planning creates and connects us with places that enhance our health, wellbeing and happiness. It ensures our natural and built environments are resilient and able to respond effectively to emerging megatrends like increased urbanisation and climate change.

Planners – highly qualified and ethical professionals with a broad range of skills and knowledge – are central to delivering great planning outcomes for all our communities.

PIA supports, educates and encourages planners at all stages of their careers through university accreditation, mentoring and professional development programs. Through advocacy, collaboration and influence-building, PIA champions planning's key role in creating communities where fairness, equity and access are fundamental and paramount.

Our business is built on a foundation of good governance, efficient and effective systems, member support services and financial sustainability.

For more information on PIA or to become a member, go to www.planning.org.au

NATIONAL BOARD

President

Darren Crombie RPIA (Fellow)

Vice-President / South Australia

Cate Hart RPIA (Fellow)

Vice-President / Victoria

Nicola Smith RPIA (Fellow)

Australian Capital Territory

Rebecca Gallacher RPIA (Fellow)

New South Wales

Jenny Rudolph RPIA (Fellow)

Northern Territory

Cindy Robson MPIA

Tasmania

Emma Riley RPIA (Fellow)

Queensland

Wendy Evans MPIA (Fellow)

Western Australia

Ray Haeren MPIA (Fellow)

Young Planner Director

Tom Auckland MPIA

DIVISION PRESIDENTS

Australian Capital Territory

Rolf Fenner RPIA (Fellow)

New South Wales

Juliet Grant RPIA (Fellow)

Northern Territory

Alexander Deutrom MPIA

Queensland

Shannon Batch RPIA

South Australia

Elinor Walker MPIA

Tasmania

Michael Purves MPIA

Victoria

Gareth Hatley MPIA

Western Australia

Vicki Lummer RPIA

PRINCIPAL SPONSOR

PRINCIPAL SPONSOR



From the very beginning, Adelaide has been a city designed for the wellbeing of its people front of mind. Reflecting Colonel William Light's genius of place and plan, the city has a distinct grid like pattern of wide streets and terraces and is hugged by 760 hectares of Park Lands. A 'city in a park,' enabling people to live well and in balance with nature and the built form.

Adelaide is consistently recognised as one of the most liveable cities in the world. A place of opportunity, with accessibility to nature and connection with community. It is a progressive city, home to state-defining and world-changing ideas and projects, where growth comes with a sustainable mindset and ideas are encouraged and nurtured.

Adelaide's pioneering spirit ensures the city stays ahead of the development curve, being thoughtfully innovative in shaping policies and prioritising our community's wellbeing and the city's sustainability as we evolve Adelaide's renowned character and heritage by design.

www.cityofadelaide.com.au

CATEGORY SPONSORS

CUTTING EDGE RESEARCH AND TEACHING



The Australian Housing and Urban Research Institute (AHURI) is only organisation in Australia dedicated exclusively to housing, homelessness, cities and related urban research.

AHURI is currently developing a National Cities Research Program, to sit alongside our established National Housing Research Program, which has delivered internationally-reconigised peer-reviewed evidence for housing policy makers for over 20 years. A similarly funded National Cities Research Program will apply the same evidence-informed lens to the critical questions facing Australia about cities and urban policy.

In addition, last year AHURI launched the Cities and Urban research hub on the AHURI website. This covers 12 urban themes—nine that are prominent already in Australian cities policy, and a further three emerging themes that are relevant to a future cities policy agenda.

AHURI invites PIA members to engage with our research (both existing and emerging) and to share your thoughts on research topics that would support the work you do in planning our urban environments.

www.ahuri.edu.au/cities

HARD WON VICTORY



Planned Cover offers bespoke insurance broking and risk management solutions nationally. With over 40 years in practice, it is proud to service the insurance and risk management requirements of the majority of Australian construction professionals, including members of the Australian Institute of Architects. Planned Cover differentiates itself from its competitors through the creation and distribution of unique products and value added services. We offer:

- Insurance products such as professional indemnity, directors and officers, employment practices, general & personal insurance products, cyber insurance and more
- Risk management: seminars, online CPD education and Practice Notes
- Claims management

All our broking staff, underwriters, claims and risk managers have extensive technical skills and a thorough understanding of what our clients' professional services involve. With years of insurance experience, they are well equipped to advise clients on risk mitigation products which may be suitable to protect their professional reputation and assets.

www.plannedcover.com.au

BEST PLANNING IDEAS -SMALL PROJECT



HOLDING REDLICH

At Holding Redlich, great law is our starting point. Across our offices in Melbourne, Sydney, Brisbane and Cairns we provide a complete range of legal services for clients of all sizes including many of Australia's largest public and private companies and all levels of government. We provide solutions tailored to our clients' needs, underpinned by the very best legal thinking and expert industry knowledge. But it takes much more than great law to build enduring partnerships - our aim with every client. That's why we have a personal stake in our clients' success and longevity, a commitment to quality in everything we do and an informal culture which values respect and collaboration. We also believe it's what you know and who you know. Our clients receive the benefit of our networks where necessary to get results. And above all else, we understand that our role is to look after our clients and their best interests.

www.holdingredlich.com

CATEGORY SPONSORS

BEST PLANNING IDEAS -LARGE PROJECT



AECOM: Urbanism + Planning is a leading planning, urban design, landscape architectural, and architectural practice with over 100 staff working across eight studios throughout Australia and New Zealand. We are a strong group of award-winning and published professionals supported by a range of advisory, engineering and environment teams within AECOM.

City building, urban renewal and place making are complex processes; the role of urban design, our Urbanism + Planning practice strives to understand the social and environmental context and uses this to establish a framework for future equitable and resilient change and development.

Our experience includes a broad range of projects, including urban regeneration, landscape design and master planning of new public realm, streetscapes, waterfront developments, mixed use town centres, structure plans, precinct plans and regional scale infrastructure. With each project the key to success is understanding the unique natural, cultural and technical conditions of the site to produce sustainable, intelligent and high-quality environments.

aecom.com/au

IMPROVING PLANNING PROCESSES AND PRACTICES



The Department of State Development, Infrastructure, Local Government and Planning is proud to be a category sponsor of the 2021 National Awards for Planning Excellence.

Congratulations to all the planners and planning businesses who have been recognised and rewarded for their outstanding efforts and achievements in the planning profession.

The planning profession plays a valued role in setting strong foundations for liveable, sustainable, and resilient communities, ensuring they have infrastructure they need — and want — to support the way they live, work, play and connect; both now and into the future.

Thoughtful and effective planning is about delivering on long-term strategic and collaborative visions for communities, which build on the economic credentials, in addition to land use and infrastructure planning.

As we move forward with our economic recovery, we remain focused on continually refining our planning framework, to ensure we remain responsive to delivering better planning outcomes for all Queenslanders.

www.dsdilgp.qld.gov.au

PUBLIC ENGAGEMENT AND COMMUNITY PLANNING



A 'city in a park,' Adelaide's design enables people to live well and in balance with nature and the built form. Adelaide is consistently recognised as one of the most liveable cities in the world.

A place of opportunity, with accessibility to nature, connection with community and a unique planning heritage.

Adelaide learns from the past and collaborates to create our future.

Adelaide. Designed for Life.

www.cityofadelaide.com.au

OUTSTANDING STUDENT PROJECT



We are the State Government's specialist authority for land use and infrastructure planning in growing urban areas across Victoria. As experts, we use our skills and knowledge to write and draw plans that determine where and how urban growth will occur.

Victoria is experiencing unprecedented growth. Our new citizens need quality places to live and work and it must be done in a planned and coordinated way.

Planning for these new homes and the businesses that will employ the growing population is why the VPA exists.

Across Victoria, we are planning for sustainable new communities that are:

- **Doing density better:** making sure we have a mix of quality designed housing options.
- **Supporting suburban jobs growth:** enabling more jobs closer to where people live.
- **Better coordinating infrastructure and development:** working to ensure that communities get the services they need when they need them.
- **Unlocking the potential of our regions:** to help make it possible for more people to live and work in our regional cities and towns.

www.vpa.vic.gov.au

FROM PLAN TO PLACE



Ranked among the world's 100 largest architecture practices, Hames Sharley is a leading national design practice with studios in every major Australian city.

For over 40 years, Hames Sharley has been responsible for creating some of Australia's most successful places through the power of design and creativity, diversity of talent and development of employees who passionately cover a broad spectrum of industry sectors.

Designing carefully considered and significant projects, including the Subi East Draft Master Plan and Acton Waterfront, Hames Sharley's work is widely recognised and awarded across Australia.

An ideas-driven practice, Hames Sharley continues to grow and develop its roots in the Australian built environment.

www.hamessharley.com.au

GREAT PLACE



At Urbis, we have one simple goal – to shape the cities and communities for a better future.

It's something we achieve by drawing together a network of the brightest minds. Think of Urbis as a creative community of practice experts, working collaboratively to deliver fresh thinking and independent advice and guidance – all backed up by real, evidence-based solutions.

So, what does this mean for you? Whether you engage with us in the areas of planning, design, policy, heritage, valuations, transactions, economics or research, you know you're dealing with the experts who will connect you to a better outcome, every time.

We help you achieve remarkable, sustainable outcomes – places or policies that work, that make our cities and communities better.

www.urbis.com.au



**2021
AWARD
WINNERS &
COMMENDATIONS**

PLANNER OF THE YEAR

CATEGORY SPONSOR: PLANNING INSTITUTE OF AUSTRALIA

Awarded to recognise a planner who provides leadership and has made a significant recent contribution to advancing the profession.

AWARD: CHRIS DE SILVA MPIA, VIC

Chris has made an undeniably positive impact on those he has worked with both in the public and private sectors over his 30-year career. His passion for planning, and his careful and considered continually inspires those around him. His journey from 18 years at the City of Whittlesea to his transition to the private sector has seen him positively influence so many aspects of the planning profession.

Chris has helped to shape, and continually improve, contemporary planning practices in relation to growth area planning and infrastructure funding. He generously shares his skills and knowledge with new planning generations, in a way that bridges any potential divides between the planning and development industries.

Chris is highly regarded and respected by leaders in the private industry and local and state government who recognise his collaborative style. When Chris speaks, people listen. He is a genuine yet humble leader within the planning community.



His local government achievements have been recognised through 11 State awards from the Planning Institute of Australia. We now recognise the person behind these achievements – Chris De Silva, National Planner of the Year.



YOUNG PLANNER OF THE YEAR

CATEGORY SPONSOR: PLANNING INSTITUTE OF AUSTRALIA

Awarded to recognise outstanding contribution or achievement by a Young Planner.

AWARD: DANIEL KRAUSE MPIA, QLD

Daniel Krause is an inspirational young planner, who has used his education and knowledge of planning practice to empower communities in the Solomon Islands. Daniel has crossed national boundaries to help our neighbours, while also being an exemplar young planner on the Gold Coast.

Not only has Daniel dedicated his early career to advancing social outcomes in the Solomon Islands, but he has also inspired fellow young planners to do the same through Bond University. Being able to advance such important work is the sign of a good young planner – but being able to empower others to do the same is the sign of an exceptional young planner.

Daniel stands out among other nominees due to his desire to go over and beyond his day job. His advocacy work, presenting at conferences, mentoring students at Bond University, and inspiring other young planners is particularly impressive.

Daniel's passion for planning is infectious and through this passion has amassed a broad range of experience. The judges were left with no doubt that Daniel makes a deserving National Young Planner of the Year for 2021.



COMMENDATION: SKYLAR SIN CHAN MPIA, ACT

Skylar Sin Chan came to Canberra as an international student, to study urban planning. His inspiration was to improve urban amenity after his experiences living through the SARS epidemic in Hong Kong. Skylar must have had some insights as to what lay ahead for Australia and the world.

In moving to another country, he was challenged with language, cultural and social support barriers which he overcame with tenacity and hard work. He has gone from strength to strength in his planning career and has taken on leadership roles with the ACT PIA Division Young Planners. His local planning advocacy has included the pop up parklet, submissions to the ACT Government and he also provides support to international students.

The judges celebrate his waved commendation and look forward to seeing more of his leadership in years to come.



PLANNING CHAMPION

CATEGORY SPONSOR: PLANNING INSTITUTE OF AUSTRALIA

Recognising a non-planner for their advocacy or lasting contribution to the urban and regional environment.

AWARD: DR CAMERON MURRAY, NSW

Dr Murray is one of the few public independent voices for planning. This is particularly important at present as the value of the profession and good planning outcomes are increasingly facing economic and political pressures. As an economist, Dr Murray has tirelessly and enthusiastically championed the purpose and value of planning. His locally and internationally published papers scrutinise economic analysis including that by the Reserve Bank of Australia.

Dr Murray has made a significant contribution to planning debate over a period of time. He addresses significant issues putting planning in a broader political and economic context. His numerous articles and interviews in media including the Australian Financial Review, Guardian, Sydney Morning Herald, The Conversation, ABC Radio, Daily Telegraph and 2GB reach a wide audience, building an increased awareness of planning.

He is an economist who understands the value of planning and the limitations of applying narrow economic methodologies. Dr Murray applies academic rigour and evidence-based



arguments to counter increasing calls in the media by lobby groups to weaken planning standards, citing economic inefficiencies, advocating 'cut red tape' and 'fast track' projects.

Our profession needs more champions like Dr Murray, outside the field of planning, who understand and advocate the value of good planning.



COMMENDATION: FIONA GOODBODY, WA

Fiona represents what we all need in the planning industry; a passionate advocate for people, communities and places who refuses to accept the limits of the existing status quo.

As a strong active transport proponent, she has set the bar for what we can do if we are willing to rock the boat and ask for bigger and better outcomes, even in small ways. By going above and beyond, Fiona has made a positive impact on a number of communities, from our young people through to our young at heart. She has created and delivered an education and engagement framework (the ACE program) that is now embedded in infrastructure design and is a model for other infrastructure planning processes.



**COMMENDATION:
MARCUS WESTBURY, VIC**

For more than two decades Marcus Westbury has not only actively contributed to the cultural life of cities but has also championed the planning and delivery of inclusive, active, and attractive places.

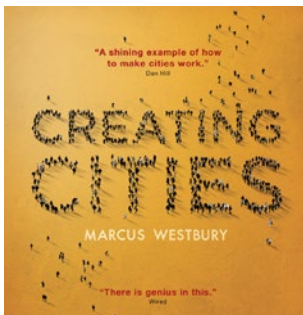
As the founder of Renew Newcastle he created a structure which was responsible for the temporary activation of many underutilised urban spaces. Over 10 years Renew activated a total of 82 Newcastle properties (and many more nationally) by temporarily placing 264 participants in disused buildings, 174 of which went on to operate successful businesses.

His essay Fluid Cities Create (2008) and his book Creating Cities (2015) have inspired many emergent planners to consider the vital role of the arts and cultural production in city building.

As CEO of CAP Ltd, a social enterprise which keeps emerging artists and arts organisations producing and performing in the inner-city, Marcus has spent the past five years driving the planning, design, and delivery of Collingwood Yards in Melbourne: a multipurpose community and arts precinct of State significance nominated for the Victorian 'Great Place Award'.

Marcus is one of the few champions for cultural contributors in the urban landscape, reminding all of us of their vital place in the creation of liveable, attractive, and fun cities.

Planning is fortunate to have Marcus Westbury as its champion.



CUTTING EDGE RESEARCH AND TEACHING

CATEGORY SPONSOR: AHURI

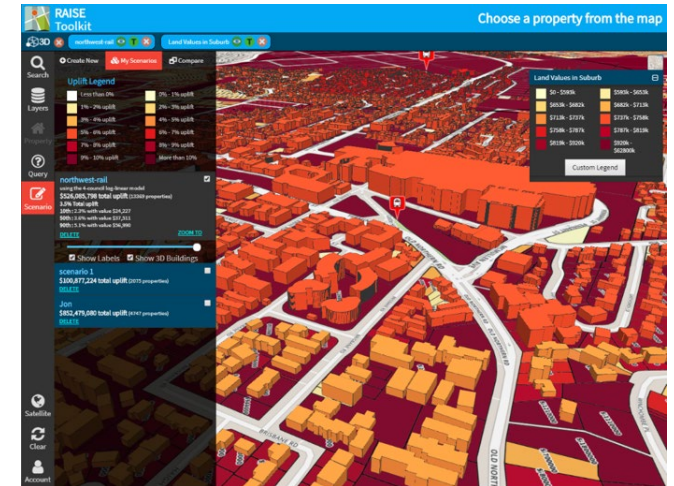
For outstanding achievement in planning scholarship, research or teaching.

**AWARD:
THE RAPID ANALYTICS
INTERACTIVE
SCENARIO EXPLORER
(RAISE) TOOLKIT**

**PROJECT TEAM: CITY
FUTURES RESEARCH
CENTRE - UNSW, QUT
DESIGN LAB, OMNILINK
AND FRONTIERSI, NSW**

In planning a more equitable and liveable city there is a need to maximise the value from current and future transformational projects across Australian Cities.

With access to unprecedented 'big data', this Smart Cities toolkit can help realise better infrastructure outcomes for Sydney and its residents. It also has opportunity for broader geographic implementation. The RAISE toolkit generates rapid estimates so that several potential infrastructure projects can be tested in real time, and alternatives compared, in an intuitive 3D map interface. RAISE enables infrastructure such as train stations to be dragged and dropped onto a map where the toolkit then calculates the likely property value increases based on accessibility



and other measures; all in real time. RAISE also calculates the likely value increase if the land is scheduled for rezoning, to permit higher density development around proposed government infrastructure (for example, a new train station).

The judging panel considers this an innovative application in the real time of spatial data to influence bold planning decisions. RAISE will assist regulators and developers to make informed decisions and further understand the economic impact of applied development.



HARD WON VICTORY

CATEGORY SPONSOR: PLANNED COVER

Recognises a planning initiative, effort or leadership that has resulted in positive planning outcomes in the face of difficult or trying circumstances.

AWARD: RURAL LAND STRATEGY

PROJECT TEAM: TWEED SHIRE COUNCIL, NSW

This award recognises projects that have applied innovative solutions and use of planning tools and techniques to address challenges, resulting in significant community benefits. This award calls for individuals or projects to demonstrate initiative, effort and leadership in the face of difficult circumstances.

Tweed Shire Council's Rural Land Strategy was adopted in May 2020 after almost seven years of development. A range of technical, social and political challenges and barriers were overcome during this time including divergent community views, which required elected Councillors to take a hands-on approach and caused project delays.

The variety of proactive mitigation strategies, designed to lessen the impact of these challenges and harness the opportunities presented by robust debate, make this Strategy a prime example of a Hard Won Victory. The extent of engagement activity throughout the development of the Strategy ensured all community perspectives were



heard, including those living in rural areas who do not have ready-access to the internet and have restricted abilities to attend Council consultation events in person.

The judging panel acknowledge that the outcome of the project may not have been the outcome some community members had desired, however the award commends Council on the extensive process that was undertaken. This included a range of communication and engagement processes including 35 Community Conversation

events, forums, information sessions, drop-ins and over 300 days of public exhibition which ensured that the entire community had an opportunity to have their say. Over the last two years of the project, the Council deferred making a determination on the Rural Land Strategy six times.

The judges commend the balanced and extended approach taken by Tweed Shire Council to establish a strategy that is considerate of this range of attitudes and expectations.

COMMENDATION: ISAAC REGIONAL PLANNING SCHEME & COASTAL PLANNING PROVISIONS

PROJECT TEAM: ISAAC REGIONAL COUNCIL, ETHOS URBAN AND CARDNO, QLD

The Isaac Regional Planning Scheme and Coastal Planning Provisions project involved a natural hazard planning policy review, community consultation and technical investigation to develop a new planning scheme that embodied a development assessment framework that provides for sustainable outcomes on the Isaac Coast.

A true hard won victory requires challenges that seem insurmountable and treacherous when attempting to navigate towards great governance and community outcomes. With public perception eroding faster than coastlines, Isaac Regional Council has achieved an enviable milestone with assistance from its consultants. The Council has replaced outdated planning policies, updated inferior digital mapping and overcome negative public perceptions of reduced development rights, to create a modern and robust planning scheme with advanced informatic digital mapping and data analysis, whilst gaining public support from multiple rounds of face-to-face public consultation. An increased level of trust, positive sentiment and rapport with the community, was generated through six rounds of face-to-face engagement. This in itself is no small feat.



Isaac Regional Council has demonstrated inspirational dedication to meeting community expectations and community first project management, whilst communicating risk hazard mitigation and protection measures. This project will create a pivotal shift in natural disaster and storm inundation perception from the public and it will communicate better planning outcomes to the public and developers for years to come. For a regional council with limited resources, this was a huge achievement and truly a hard won victory.



BEST PLANNING IDEAS - SMALL PROJECT

CATEGORY SPONSOR: HOLDING REDLICH

Awarded to recognise outstanding planning ideas for a project that is limited to a site, local place or neighbourhood.

AWARD:
**CHILLOUT HUBS:
 SMART SOCIAL SPACES
 CREATING CONNECTED
 GREEN PLACES**

PROJECT TEAM:
**UNSW SYDNEY,
 STREET FURNITURE
 AUSTRALIA, GEORGES
 RIVER COUNCIL
 AND UNIVERSITY
 OF SYDNEY, NSW**

As cities become more compact and high density living becomes the norm, there is greater pressure for councils to provide and maintain more and different types of public space amenities, making the LGA liveable, productive and socially sustainable for its citizens. The move to smart cities and smart technology can maximise the potential of urban and recreational spaces. The need for such high quality spaces has been further emphasised during the COVID-19 crisis.

The project was a collaborative approach that sought to design and produce innovative open-air community spaces, which they have called ChillOUT Hubs. ChillOUT Hubs are designed to be human centred taking into consideration and responding to, environmental features of



different areas and thus are adaptable to local community needs and expectations. This highly engaging project was a collaboration between industry, academia and local government that sought a practical, function and sustainable translation of smart cities concepts.

The judges were impressed with the approach which focussed on

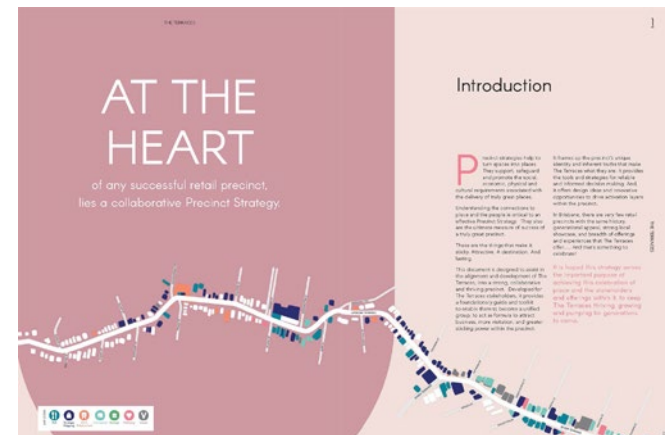
deliverability and useability not just the theory of a smart cities concept. In the judges opinions, the ChillOUT hubs address a number of factors and provide a variety of economic, social and health benefits to local communities that are scalable and can be tailored to meet local demands and needs.

COMMENDATION: LATROBE AND GIVEN TERRACES PLACE STRATEGY AND ACTIVATION TOOL KIT

PROJECT TEAM:
**PLACE DESIGN
 GROUP AND
 BRISBANE ECONOMIC
 DEVELOPMENT
 AGENCY, QLD**

The Latrobe and Given Terraces Precinct Strategy and Activation Tool Kit is an innovative concept 'powered by the people, for the people' to address specific needs of the community and empowers local communities to save their centres. This is particularly topical in light of the COVID-19 pandemic over the last 12+ months.

The judges felt the toolkit delivered a place based approach to help inform, empower and build precinct stakeholders' capacity to themselves raise place profile and increase visitation. The overwhelming participation from stakeholders both online and in person demonstrates the project's need and feeling of ongoing ownership from the stakeholders. The strategy provides a blueprint which breaks down the process and steps it out for traders to successfully roll out in the future. The fact that implementation will be led by business owners and the community, with no ongoing cost to council from a monetary or resourcing perspective, and exhibits the viability of this project from concept to delivery. The judges considered the toolkit to be innovative and has broad transferability across Australia, particularly in the context of the ongoing pandemic and likely economic changes to follow. This project exemplifies the advancement of current planning practice within a localised setting.



BEST PLANNING IDEAS - LARGE PROJECT

CATEGORY SPONSOR: AECOM

Awarded to recognise outstanding planning ideas for a large project that has town or city, regional, state-wide, national or cross-jurisdiction benefit.

AWARD: TRANSPORT STRATEGY 2030

PROJECT TEAM: CITY OF MELBOURNE, VIC

City of Melbourne's Transport Strategy 2030 presents a visionary, transformative and evidence-based strategy to address the significant and growing transport challenges being faced by the city.

The development of the strategy centred on an innovative and ambitious approach to public participation, which was underpinned by a robust evidence base and media-led communications program to begin a bold, provocative, public conversation with the broader Melbourne community about the big transport issues facing the city.

The transparent public discussion and evidence led approach enabled the strategy to legitimise a number of more progressive transport policies. These include reallocating road space for dedicated, protected cycleways and walking paths, lowering speed limits, removing parking and introducing market-based parking pricing. It also provides evidence-based support to introduce a road pricing scheme in Melbourne to manage vehicle demand.

It is a leading example of contemporary policy development, which combines traditional



evidence-based policy-making with modern community engagement strategies to foster community ownership and drive the development of practical, yet innovative initiatives, policies and actions.

Implementation of the strategy has commenced, with a number of actions fast-tracked in a cross-organisational approach with the Victorian Government in response to COVID-19.

It is a model that the judges consider can be used in a range of cities and places across Australia as they grapple with growing transport and planning challenges. The approach to the public engagement process, particularly the innovative use of traditional and social media, is one which can be applied in other contexts and many different planning projects.

COMMENDATION: CAPE, TORRES, AND GULF ECONOMIC OPPORTUNITIES PLAN

PROJECT TEAM: ARUP AUSTRALIA PTY LTD AND TORRES CAPE INDIGENOUS COUNCIL ALLIANCE (TCICA) INC., QLD

The Cape, Torres and Gulf Opportunities Plan has been prepared to focus on the economic opportunities that could be developed in and around the Cape, Torres and Gulf areas of Queensland. The plan has taken a significant collaborative approach amongst 14 local government areas in Far North Queensland over a significant geographic area (130,000km²). The success to capture and balance multiple stakeholder views in itself is a significant achievement.

The considerable indigenous culture and natural environment assets of the area provides an excellent opportunity for new development in the region, despite the need to overcome substantial socio-economic and geographic challenges.

The highly collaborative approach taken will mean the plan has a high level of ownership and support, and will deliver a well considered and balanced 'shared vision statement' for the next 20 years.

The plan is a worthy winner given the approach taken, to the inclusive engagement approach and the realistic methodology, to tangible projects and initiatives taken to promoting development and economic opportunity in the region.



IMPROVING PLANNING PROCESSES AND PRACTICES

CATEGORY SPONSOR: QLD DEPARTMENT OF STATE DEVELOPMENT, INFRASTRUCTURE, LOCAL GOVERNMENT AND PLANNING

Awarded to recognise the achievements of translating good planning policy into improved processes and practices in the workplace and "on the ground".

AWARD:
INHABIT PLACE TOOL

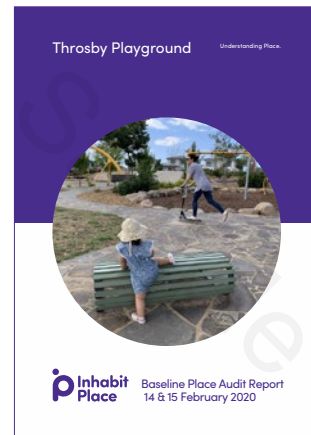
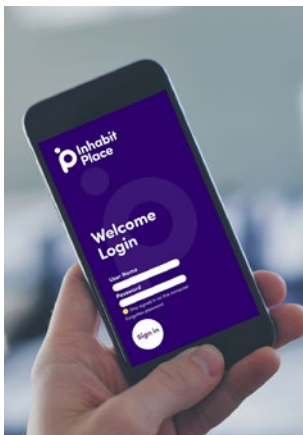
PROJECT TEAM:
INHABIT PLACE, ACT

The judges felt this locally developed place making tool was the stand out winner in this category and this is also being demonstrated by its use nationally and internationally.

The tool reports real-world observations and advocates for improved urban design outcomes by providing an intimate understanding of how a public space is being used. The judges were also extremely impressed by the simplicity of the tool which can be utilised by both experts and laypersons.

Inhabit Place has been successfully used in a variety of public spaces including streets, plazas, playgrounds, parks, plazas, train stations and bike paths. The tool has informed tactical urbanism projects, capital works and landscape options leading to critical improvements in planning and design.

The judges look forward to seeing the Inhabit Place Tool used more widely to support better urban design outcomes for our cities and towns.



PRESIDENT'S AWARD:
CONNECTED HOBART SMART CITY FRAMEWORK AND ACTION PLAN

PROJECT TEAM:
CITY OF HOBART, TAS

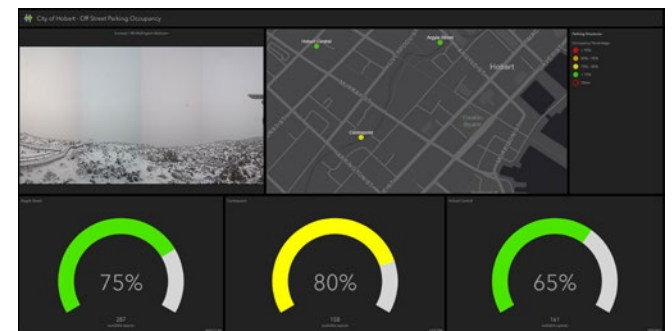
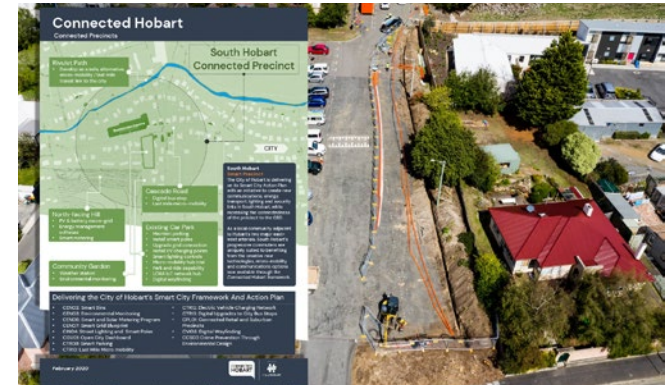
The City of Hobart's program 'Connected Hobart' is a place-based program for smart cities transformation with a vision to combine human ingenuity with technological innovation with emphasis to enrich the quality of life for all persons living, visiting, or working in Hobart. The Connected Hobart framework goal is to be the most economically, environmentally, and socially connected capital city community in Australia by 2030.

The program defines what a connected-smart city means for Hobart but moves beyond the definition to identify realisable projects with the focus being away from simply integrating the newest and latest available technologies.

The detailed action plan is the bridging document between strategy and on the ground outcomes.

The program's principles are transferable to other organisations responsible for delivering diverse activities through the use of existing and emerging technologies. The program also demonstrates a resilient model and has provided continuity of services and redeployment in response to COVID-19.

Connected Hobart is a precursor to and formed the basis for adopting the Hobart City Deal smart city program. It is an exemplary example of taking planning policy and strategy into practice.



PUBLIC ENGAGEMENT AND COMMUNITY PLANNING

CATEGORY SPONSOR: CITY OF ADELAIDE

Awarded to recognise initiatives in best practice public engagement that achieves an outstanding and innovative contribution to social planning processes and outcomes.

AWARD: HAIG PARK EXPERIMENTS 2019

PROJECT TEAM: CITY RENEWAL AUTHORITY, UNIVERSITY OF CANBERRA, TAIT NETWORK, AINSLIE AND GORMAN ARTS CENTRES & DIONYSUS, ACT

The judges were impressed with the outstanding, authentic approach to place making and attention to detail of the consultation which led to a measurable improvement in the use of this city park by local and city-wide residents.

Haig Park is one of Canberra's most prominent and centrally located urban green spaces, but it has long been underutilised, perceived as unsafe and primarily utilised as a thoroughfare.

The experiments that were undertaken were also used to help identify and drive park improvements, new infrastructure, and long-term planning. The experiments led to greater community custodianship of and positivity about Haig Park.



The Haig Park experiments represented an extensive undertaking by City Renewal Authority and a University of Canberra led consortium. Congratulations to this consortium for this exemplar in public engagement and community planning.



COMMENDATION: SUNSHINE COAST COMMUNITY STRATEGY - BUILDING A STRONGER COMMUNITY TOGETHER

PROJECT TEAM: SUNSHINE COAST COUNCIL, QLD

The steps taken to make this community engagement strategy accessible to all people, is what sets it apart.

The judges were impressed by the emphasis placed on engagement with future generations and engaging with people who are not usually engaged in these types of projects through a variety of formats including children's feedback drawings and futures visioning workshop, community groups, literacy class engagement and photograph submissions. This would have resulted in wide variety of interesting data types (photos and drawings and workshops and expos), for Council to consider and reflect upon. It also allows Council to hear voices that normally would be involved in processes like this, which provided a depth and robustness to the final document.

Developing the Sunshine Coast Community Strategy 2019-2041 required a deep understanding of the community, its needs, and aspirations. The outcomes of this engagement strategy indicated that the community's issues are not limited to issues like roads, rates and rubbish, but much broader social issues, not traditionally the responsibility of local governments. In addressing these matters, Sunshine Coast Council has demonstrated a real commitment to the community and entering into partnerships



with community groups who deal with issues such as mental health, suicide prevention and affordable housing to try to address these matters.

Council has produced both a Community Strategy document (which sets a vision and outcomes) and a Community Strategy Action Plan and videos which communicate these plans to the community.

Procedurally, the engagement strategy has sought to broaden Council's skills on engaging with the community, even 'building in' an opportunity for Council to revise its method of community engagement as part of the strategy and provides a clear approach to measure and report progress. These learnings and feedback will no doubt shape future community engagement initiatives by Sunshine Coast Council into the future.

**PRESIDENT'S AWARD:
CITY OF PALMERSTON
COMMUNITY PLAN**

**PROJECT TEAM:
CITY OF PALMERSTON
AND DEMOCRACYCO
PTY LTD, NT**

The City of Palmerston stepped outside of usual approaches to community planning and empowered and entrusted a group of 40 community members to write the City of Palmerston Community Plan. Guided by an innovative collaborative process, the Community Plan was written by, and for, the people of Palmerston.

The Community Plan demonstrates a unique understanding and acknowledgement of the needs and aspirations of a community: the opportunity to rebuild trust in the community, share the challenges and enable key stakeholders to participate collaboratively. The consultation process built understanding of engagement best practice and allowed community members to 'stand in the shoes' of their Council, with tangible results.

DemocracyCo used a sortition approach to achieve a diversity of participation - young people, Indigenous communities, families, senior citizens, multicultural communities, people of different economic and educational backgrounds.

The steps taken to make this community plan accessible to all people and for all people, is what sets it apart. The Community Plan demonstrates a deep understanding of the community, its needs, and aspirations.

In allowing the community to take ownership of the Community Plan, City of Palmerston Council has demonstrated a real commitment to the community and the consultative process.



OUTSTANDING STUDENT PROJECT

CATEGORY SPONSOR: VICTORIAN PLANNING AUTHORITY

Awarded to recognise outstanding planning work by a tertiary student.

**AWARD:
REWILDING
INDUSTRIAL LAND**

**PROJECT TEAM:
GISELLE OSBORNE,
MONASH
UNIVERSITY, VIC**

Rewilding Industrial Land is a strategy for metropolitan Melbourne/Naarm which seeks to build a network of biodiverse green infrastructure on employment land.

It challenges the existing Victorian framework for biodiversity planning which uses offsets to mitigate the effects of urbanisation on ecosystems, investing in conservation land outside the Urban Growth Boundary. Rewilding Industrial Land offers an alternative path forward for biodiversity planning. It outlines a vision to conserve and rewild remnant patches of native vegetation on both public and private employment land, incorporating them within the open space network.

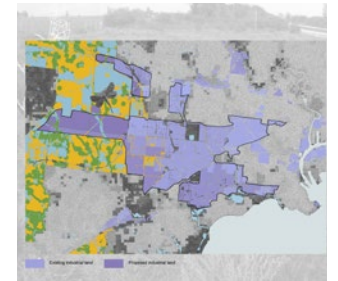
The project also employs a range of innovative audio and visual techniques to enhance planning communication. Its original use of a time-lapse recording at the interface of employment and conservation land in the Craigieburn Grasslands, which includes sound recording of the frogs and birds at dusk, is an evocative attempt to educate the



viewer about the landscapes it is informed by.

The Judges found the project provides both valuable and practical contributions to contemporary challenges, including the development of new guidance that integrates biodiversity with urban design strategies. These strategies can be easily translated and applied to current precinct and development proposals across the country.

The student's work is highly regarded both for the presentation of new ideas about the biodiversity and employment land use and for its use of a range of communication techniques to communicate planning ideas and concepts.



It is an excellent project that is highly relevant to the planning and management of industrial precincts and biodiversity corridors. The project challenges existing frameworks and calls for a better, more integrated approach that promotes "Protecting, Connecting and Rewilding" our valued biodiversity.

**COMMENDATION:
SUSTAINABLE
INDIGENOUS
LIVELIHOODS
CONCEPTUAL
FRAMEWORK**

**PROJECT TEAM:
JESSE MARNOCK PIA
(ASSOC.), JAMES COOK
UNIVERSITY, QLD**

Jesse's clever work creating and applying a Sustainable Indigenous Livelihood framework reconciles traditional indigenous knowledge with the town planning system and has direct application to a variety of organisations.

His work highlights the importance of knowledge and culture as a grounding for Indigenous livelihoods, and uses a simple analogy of a tree to convey complex and sophisticated ideas about the role of Indigenous peoples in land use planning. Ultimately, his work highlights the importance of Indigenous knowledge and culture in the planning process.

From Jesse's research it became evident that an Indigenous livelihood incorporates many different aspects. Accordingly, a significant outcome of this project is the ability to incorporate an often misunderstood cultural concepts into a broad spectrum of projects. Importantly, it is also seen as a way to close the gap between modern and traditional cultural processes.

It is therefore no surprising to see that this work that is already being applied nationally and internationally, including the Asia Pacific.

The judges were impressed by Jesse's work and see him as a future leader in Indigenous planning.



FROM PLAN TO PLACE

CATEGORY SPONSOR: HAMES SHARLEY

Awarded to recognise the implementation of a plan into a successful place.

**AWARD:
HOWARD SMITH
WHARVES**

**PROJECT TEAM:
BRISBANE CITY
COUNCIL AND HSW
NOMINEES, QLD**

Howard Smith Wharves (HSW) is an exemplary development that embodies the sub-tropical and outdoor lifestyle values of Queensland's capital, Brisbane. Since its opening in November 2018, the ongoing patronage, economic successes and contribution to Brisbane's vibrant 'river culture' are deserving of recognition.

Central to the success of HSW was the promotion of a long-term vision that allowed the project to weather the foreseen and unforeseen challenges that emerged over the 20 years between planning and delivery.

Public engagement with the community has continued beyond project delivery with HSW and Council working together to address community concerns and support community initiatives, since the site opened in late 2018.

Howard Smith Wharves is considered to be a valuable contribution to the present and future of Brisbane, noting the transformation of the site 'from plan to place' through roughly two decades of planning, into a successful place and as such, is worthy of the national award.



AWARD:
CAMPBELL S5

PROJECT TEAM:
**HILL THALIS
ARCHITECTURE
AND URBAN
PROJECTS, JANE
IRWIN LANDSCAPE
ARCHITECTURE (JILA)
& ACT SUBURBAN
LAND AGENCY, ACT**

The judges were extremely impressed with this exemplar of urban infill development including how well it was integrated into the existing built form and natural setting. There was also exceptional attention in its design, to honour the Griffin Legacy.

Campbell Section 5, a six-hectare site occupies a pivotal location in Canberra at the junction of two major Griffin axes - Constitution Avenue (The Municipal Axis) and ANZAC Parade (The Land Axis). Few sites, by location, have this opportunity to reinforce the pre-eminent Griffin Legacy with such high amenity and connectivity. With a major frontage to the recently upgraded Constitution Avenue, Campbell Section 5 realises and reinforces the base of the National Triangle as a prestigious address of the National Capital.



GREAT PLACE

CATEGORY SPONSOR: URBIS

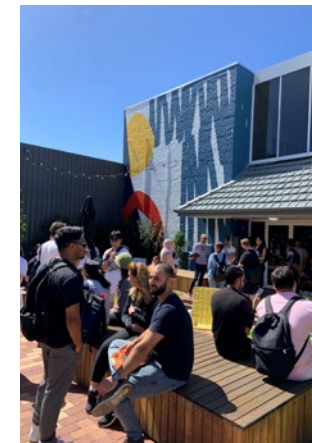
Awarded to recognise a great place, street or neighbourhood in Australia.

AWARD:
INGLENOOKS

PROJECT TEAM:
**INGLEWOOD ON
BEAUFORT INC., WA**

Ingenooks is an excellent demonstration of a community-driven public space.

Conceived, funded, designed, and delivered by locals, Ingenooks has empowered the local community, created new energy for events in the area, and supported local businesses. Ingenooks has transformed road-widening setbacks, and created outdoor living rooms for a suburb that is reinvigorating its identity with events and community organisations. This great place has illustrated that small projects can have very big impacts, evidenced by their high level of use by the community.



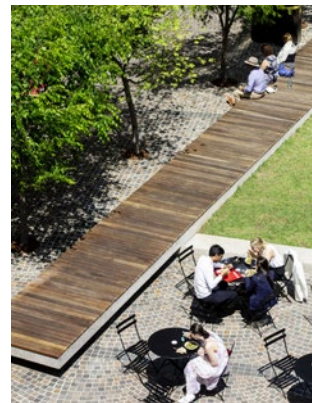
**COMMENDATION:
DARLING SQUARE**

**PROJECT TEAM:
ASPECT STUDIOS
WITH KENGO KUMA
& ASSOCIATES AND
LENDLEASE, NSW**

This award recognises a great place, street or neighbourhood. The project represents creation of true sense of place, community involvement, local culture and history, whilst offering a vision for tomorrow.

Darling Square has become one of Sydney's most walkable and connected places. It succeeds in delivering a place of local and neighbourhood scale within the context of an international destination. Darling Square reintroduces the fine grain that forms a seamless link with its urban context of Central Station, Ultimo and Chinatown. The place sets a new standard and quality for public domain in a dense urban environment and provides a connected and enduring community feel.

The judges note that a fabulous location does not in any way guarantee a great space and commend this project for setting a benchmark for people-oriented public space in Australia. The design exhibits excellent attention to detail, a suite of diverse, high quality and flexible public spaces, centred around an iconic public building and square that accommodates both the present and future civic experiences for a dynamic new community. The design team described their aspiration to create a space that "embodies a new urban typology; fusing landscape, architecture, art, food and culture - a captivating new world-class urban neighbourhood that has rejuvenated the "heart



of Sydney". The judges commend them on achieving this goal. Darling Square has quickly attracted people and business, created atmosphere and provided new opportunities for Sydneysiders and visitors. Importantly, it creates a beautiful hub for residents to enjoy the rich

fabric of Sydney and connect with the internationally recognised harbour and entertainment precinct. The judges commend the team and many contributors, which have helped make Darling Square a worthy award-winning great place.

**COMMENDATION:
U CITY**

**PROJECT TEAM:
JENSEN PLUS
AND UNITING
COMMUNITIES, SA**

Conceived as a vertical village comprising retail, commercial, social services and accommodation, U City is a significant mixed-use project which makes an important contribution to both the public realm and the provision of community-based support services, including specialist disability, short-stay, and retirement accommodation.

Through its scale and complexity, U City's design is a respectful response to the site's built history, incorporating design elements which reference the former church's architectural form and use. The project is an exemplar in environmental sustainability and is the outcome of research in international best practice and end user engagement with a commitment to social sustainability and environmental design.

Through aspirational and collaborative thinking, U City acts as a model for future development and social service provision in our cities. It is recognised by the judging panel for its progressive, inclusive and integrated approach to project development with the capacity to benefit a much broader community than the one it accommodates.



2020 AWARD NOMINATIONS

YOUNG PLANNER OF THE YEAR

Daniel Krause MPIA | QLD
Timothy Walsh PIA (Assoc.) | NSW
Skylar Sin Chan MPIA | ACT
Liz Webster MPIA | VIC
Andrew Holmes PIA (Assoc.) | TAS
Taylah Slattery PIA (Assoc.) | SA
Kevin Vizzutti MPIA | WA

PLANNING CHAMPION

Daniel Gore QC | QLD
Dr Cameron Murray | NSW
Marcus Westbury | VIC
Fiona Goodbody | WA

CUTTING EDGE RESEARCH & TEACHING

The Rapid Analytics Interactive Scenario Explorer (RAISE) Toolkit | City Futures Research Centre - UNSW, QUT Design Lab, Omnilink and FrontierSI | NSW

Geelong's Changing Landscape: Ecology, Development and Conservation (2019) | Professor David S Jones MPIA and Associate Professor Dr Phillip Roös | VIC

Children's everyday mobilities and low carbon living | Hulya Gilbert (PhD Research Project) | SA

HARD WON VICTORY

Isaac Regional Planning Scheme & Coastal Planning Provisions | Isaac Regional Council, Ethos Urban and Cardno | QLD

Rural Land Strategy | Tweed Shire Council | NSW

Open for Business - Planning Response to COVID-19 | Planning Group, Department of Environment, Land, Water and Planning (DELWP) | VIC

Transformation and Uplift of Churchill Road Precinct | City of Prospect | SA

Collie Federation Façade Restoration | Shire of Collie, Andrew Dover, Robert Quinn and Scott Geere | WA

Ooraminna Oaks Residential Living | Ian Brashaw UrbanPlan, Brian Blakeman Surveys, Low Ecological Services, and Donald Veal Consultants | NT

BEST PLANNING IDEAS - SMALL PROJECT

Latrobe and Given Terraces Place Strategy and Activation Tool Kit | Place Design Group and Brisbane Economic Development Agency | QLD

ChillOUT Hubs: Smart Social Spaces Creating Connected Green Places | UNSW Sydney, Street Furniture Australia, Georges River Council and University of Sydney | NSW

Mount Street Area Masterplan | City of Stonnington, Tract Consultants and Glas Urban | VIC

Treasury Complex and Public Buildings, Hobart CMP | Purcell and ERA Planning | TAS

Port Lincoln Precincts Master Plan including the implementation of the 'Tuna Poler Statue' | City of Port Lincoln, Jensen PLUS, Brecknock Consulting, Infracplan and Ken Martin | SA

Equine Management Interactive Module | Shire of Serpentine Jarrahdale | WA

"Master Plan 320 Arnhem Highway Humpty Doo, Northern Territory" | Tropics Consultancy Group | NT

BEST PLANNING IDEAS - LARGE PROJECT

Cape, Torres, and Gulf Economic Opportunities Plan | Arup Australia Pty Ltd and Torres Cape Indigenous Council Alliance (TCICA) Inc. | QLD

Parkes Special Activation Precinct Master Plan | NSW Department of Planning, Industry and Environment - Special Activation Precincts team | NSW

Transport Strategy 2030 | City of Melbourne | VIC

The Wilkinsons Point Plan | Ireneinc Planning and Urban Design, Fender Katsalidis Architects and Oculus: Landscape Architecture + Urban Design | TAS

Jabiru Town Plan 2019 | NT Department of Infrastructure, Planning and Logistics and Parks Australia | NT

IMPROVING PLANNING PROCESSES AND PRACTICES

Waverley Architectural Mapping Project | Waverley Council | NSW

Inhabit Place Tool | Inhabit Place | ACT

Design Guidance Document - Stations & Precincts | Level Crossing Removal Project | VIC

Connected Hobart Smart City Framework and Action Plan | City of Hobart | TAS

Suburban Residential Character Assessment | City of Prospect, WAX Design and Grieve Gillett Andersen | SA

Small Business Friendly Approvals Project | City of Stirling | WA

Reforming the NT's Planning System | NT Department of Infrastructure, Planning and Logistics | NT

PUBLIC ENGAGEMENT & COMMUNITY PLANNING

Sunshine Coast Community Strategy - Building a stronger community together | Sunshine Coast Council | QLD

Kingscliff Locality Plan and Development Control Plan | Tweed Shire Council | NSW

Haig Park Experiments 2019 | City Renewal Authority, University of Canberra, Tait Network, Ainslie and Gorman Arts Centres & Dionysus | ACT

All Abilities Park, Ross Reserve, Noble Park | City of Greater Dandenong, Ethos Urban and Land Design Partnership | VIC

Church and John Street Improvement Plan Engagement Program | GHD Pty Ltd | SA

Future White Sands - Community Engagement | Creating Communities & Woolworths Group | WA

City of Palmerston Community Plan | City of Palmerston and democracyCo Pty Ltd | NT

OUTSTANDING STUDENT PROJECT

Sustainable Indigenous Livelihoods Conceptual Framework | Jesse Marnock PIA (Assoc.) - James Cook University | QLD

A Postcolonial Reframing of Metropolitan Strategic Planning in Redfern | Sebastian Aguilar PIA (Assoc.) | NSW

Rewilding Industrial Land | Giselle Osborne, Monash University | VIC

From activism to collaborative city making: PARK(ing) Day as a case study in Tactical Urbanism | Mary McNeill PIA (Assoc.) | TAS

Developing water sensitive cities: Community perceptions of WSUD rain gardens in Richmond, Adelaide | Kelsey Fetherstonhaugh PIA (Assoc.) | SA

FROM PLAN TO PLACE

Howard Smith Wharves | Brisbane City Council and HSW Nominees | QLD

Campbell S5 | Hill Thalys Architecture and Urban Projects, Jane Irwin Landscape Architecture (JILA) & ACT Suburban Land Agency | ACT

Brockman Street Food and Beverage Precinct | Shire of Manjimup | WA

GREAT PLACE

Darling Square | ASPECT Studios with Kengo Kuma & Associates and Lendlease | NSW

Nature Play at Royal Park | City of Melbourne and Victorian Department of Health and Human Services | VIC

U City | Jensen PLUS and Uniting Communities | SA

Inglelooks | Inglewood on Beaufort Inc. | WA

THANK YOU TO OUR AWARD SPONSORS



The Planning Institute of Australia (PIA) is the national body representing planning and the planning profession. Through education, advocacy, and professional development, PIA is the pivotal organisation serving and guiding thousands of planning professionals in their role of creating better communities.

PIA currently represents approximately 5300 members nationally and internationally, and connects with more than 7500 planners annually.

PIA's goal is to support the Australian planning profession to create diverse, cohesive and liveable communities, vibrant economies, and sustainable places.



Contact PIA

For information on PIA policies, events, activities, initiatives or to become a member.

PO Box 5427
Kingston ACT 2604
02 6262 5933
membership@planning.org.au
www.planning.org.au

